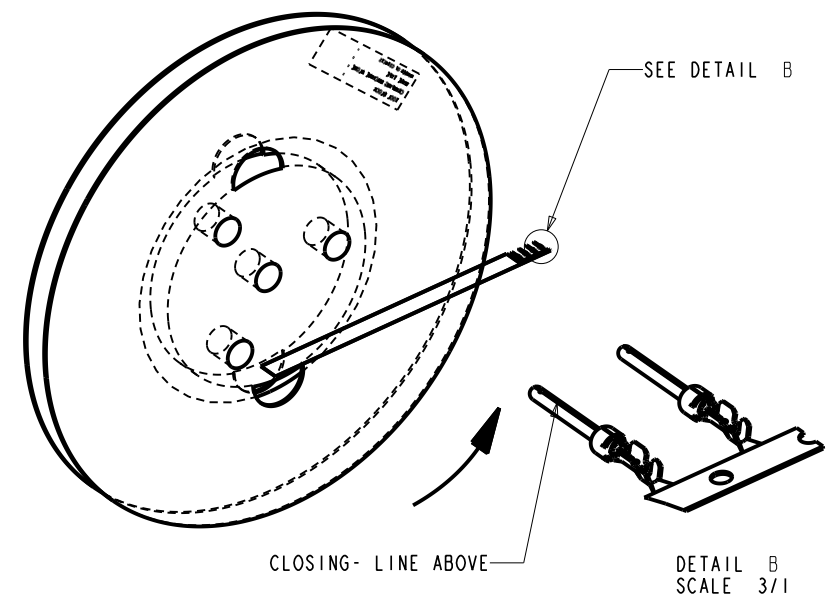
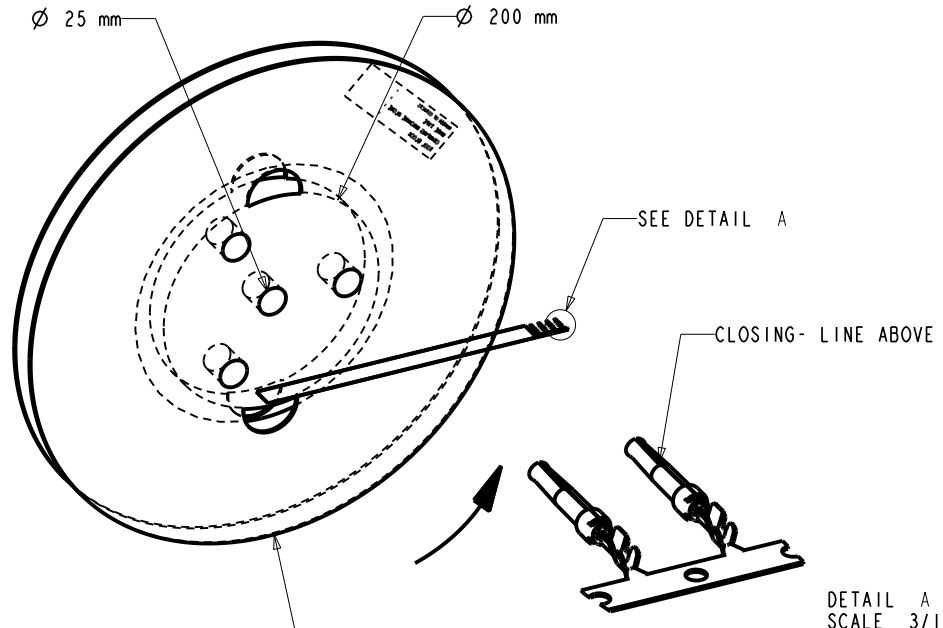


REFERENCE FOR REEL ACCORDING TO FEEDING DIRECTION

GAUGE	REEL OF 5000 FEMALE CONTACTS				REEL OF 10000 FEMALE CONTACTS				GAUGE	REEL OF 5000 PIN CONTACTS				REEL OF 10000 PIN CONTACTS			
	#	Part No.	Part No.	Part No.	Part No.	Part No.	Part No.	Part No.		#	Part No.	Part No.	Part No.	Part No.	Part No.	Part No.	Part No.
# 24-28	86566610064	86566610064LF	86566640064	86566640064LF	# 24-28	86564610064	86564610064LF	86564640064	86564640064LF								
# 20-24	86566620064	86566620064LF	86566630064	86566630064LF	# 20-24	86564620064	86564620064LF	86564630064	86564630064LF								
# 24-28	86566610065	86566610065LF	86566640065	86566640065LF	# 24-28	86564610065	86564610065LF	-----									
# 20-24	86566620065	86566620065LF	86566630065	86566630065LF	# 20-24	86564620065	86564620065LF	86564630065	86564630065LF								
# 24-28	86566610067	86566610067LF	86566640067	86566640067LF	# 24-28	86564610067	86564610067LF	-----									
# 20-24	86566620067	86566620067LF	86566630067	86566630067LF	# 20-24	86564620067	86564620067LF	86564630067	86564630067LF								



Ø 450 reel 5000cts  
Ø 600 reel 10 000cts

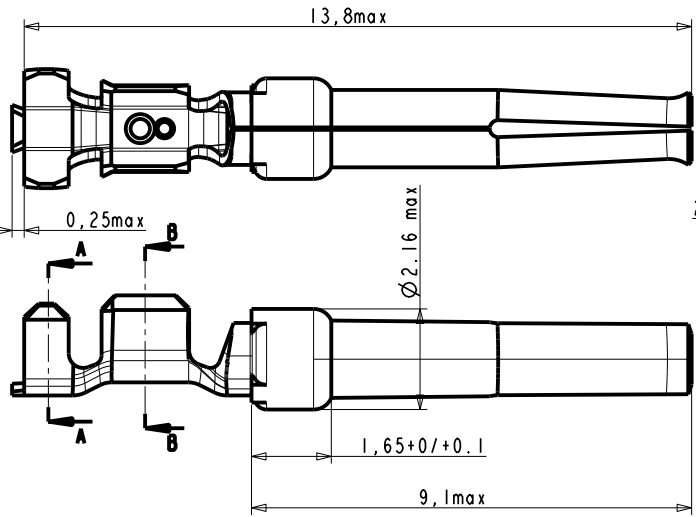
Copyright FCJ

NOTE : ROHS INFORMATIONS  
The LF products meet European union directives and other country regulations as described in GS-22-008  
Terminations plating spec : 2um Nickel min + 2um Sn min  
Packaging Spec : see GS-14-920

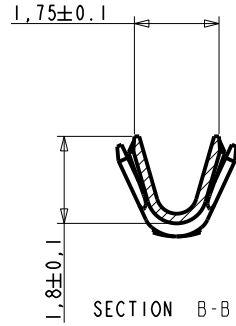
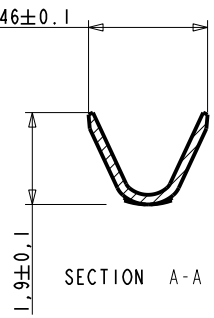
rev	ecn no	dr	date
D	LS3082	MPE	01/10/03
E	LS05-0094	LGO	18/10/05
F	LS06-0196	MPE	27/11/2006
G	LS08-0127	MPE	2008/05/13
-	-	-	-
-	-	-	-

www.fciconnect.com		surface -	tolerance std	projection	mm
		ISO 1302 ✓	ISO 406 ISO 1101		
TOLERANCES UNLESS OTHERWISE SPECIFIED					
Dr	M PESSON	11/07/03	ANGULAR	LINEAR	size A3 Scale 5/1
Eng	-	-	0.X	±0.3	
Chr	P LEGARE	11/07/03	0.XX	±0.1	
Appr	-	-	0.XXX	±0.05	
Product family				Spec ref	
		CRIMP PIN		DWG no	
		#Wire 24-28 Ø1.02		C01-8656-1527	
catalog no		CUSTOMER		sheet 1 of 2	

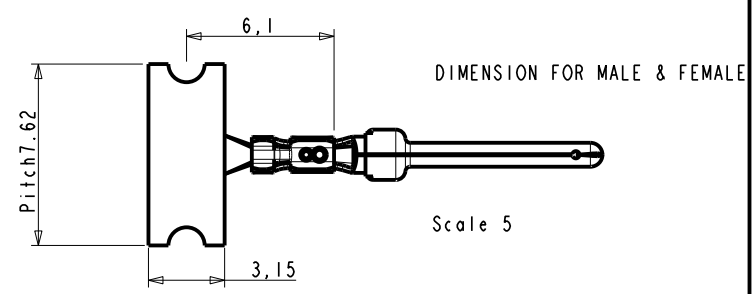
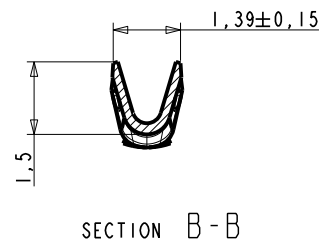
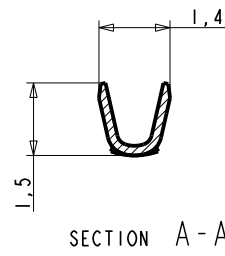
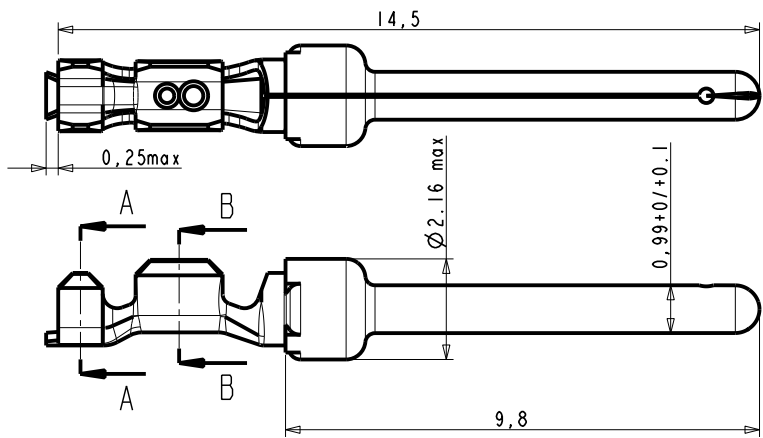
REV F - 2006-04-17



CROSS SECTION FOR CT #20-24



- NOTES
- 1- Material : Phosphor bronze, thickness 0.20
  - 2 -Finish on contact area : termination 064:gold flash  
 termination 065:0.76μ Au  
 termination 067:0.4μ Au  
 finish on termination : bright tin lead over nickel
  - 3 -Wire range :20 to 28 AWG(see ref sheet 1/2)
  - 4 -Max outer dia of wire insulator:  
 -1.73 mm for contact #20-24  
 -1.02 mm for contact #24-28
  - 5 -Current carrying capacity per contact:  
 5 Amps max when crimped to #20 AWG  
 5 Amps max when crimped to #22 AWG  
 3 Amps max when crimped to #24 AWG  
 2 Amps max when crimped to #26 AWG  
 1 Amps max when crimped to #28 AWG
  - 6 -After 5 insertions into connector, contact retention must be 5 pounds axial load min
  - 7 -When contact is crimped to 20 AWG, the insulation support crimped height must be 1.78 mm max to ensure a proper insertion into housing.
  - 8 -Packaging : Reel



www.fciconnect.com		surface -	tolerance std	projection	mm
		ISO 1302	ISO 406 ISO 1101		
TOLERANCES UNLESS OTHERWISE SPECIFIED					
Dr	M PESSON	11/07/03	ANGULAR	0.X ±0.3	size A3
Eng	-	-	LINEAR	0.XX ±0.1	Scale 10/1
Chr	P LEGARE	11/07/03	0° ±2°	0.XXX ±0.05	ECN LS08-0127
Appr	-	-	Product family	-	Spec ref -
	title CRIMP PIN			dwg no	Rev.
	#Wire 24-28 Ø1.02			C01-8656-1527	G
	catalog no			CUSTOMER	sheet 2 of 2

REV I - 2006-04-17